

844 R THREE-PHASE

for sliding gates
with max weight of 2.200 kg (Z12)



■ Ideal for commercial or industrial gates

The FAAC 844 gearmotor was designed to move the heaviest commercial or industrial gates in the simplest, most convenient way.

■ Total safety

The special twin-disk anti-crushing clutch, in oil bath, enables torque adjustment from 0 to 62Nm. As the gearmotor is non reversing, no electric locks need be installed and, in the event of power failure, the key-operated release device makes it possible to open and close the gate manually.

■ Long life

Constant, complete oil-bath lubrication of mechanical components plus assembly in a high resistance pressure-cast aluminium body ensure a very long life.

■ Dedicated electronics

The FAAC 844 R THREE-PHASE gearmotor can be controlled by an electronic dedicated card with microprocessor, known as 844 T.

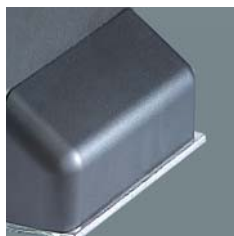
It integrates the contactors and has an electronic braking device ensuring immediate gate stop.



■ Cover



■ Release device with customised key



■ Screw cover



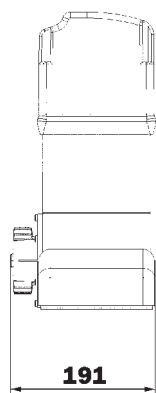
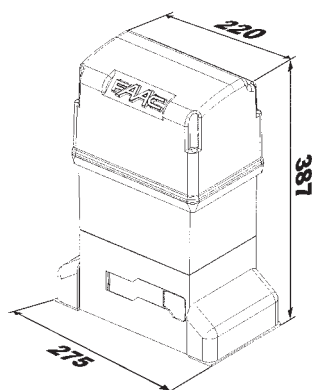
■ Base in pressure cast aluminium with cathoporesis treatment



- 1 Cover
- 2 Inductive limit-switch
- 3 Pinion



DIMENSIONS



Values in mm

Technical specifications	844 R THREE-PHASE
Power supply	400 Vac (3ph)(+6%-10%) 50 (60) Hz
Absorbed power	950 W
Absorbed current	2.5 A
Motor rotation speed	1.400 rpm
Reduction ratio	1:30
Operating ambient temperature	-20°C ÷ +55°C
Weight with oil	15 kg
Protection class	IP 44
Type of oil	FAAC OIL XD 220
Gate speed	9.5 m/min (Z16)/7.2 m/min (Z12)
Max torque	62 Nm
Limit-switch	Inductive with plate
Clutch	Twin disk in oil-bath
Protective treatment	Cataphoresis

Specifications of 844 T control board (for external applications)	
Power supply	230 V 3ph (+6% -10%) 60 Hz 400 V 3ph+N (+6% -10%) 60 Hz
Motor maximum load	1300 W
Accessories output	24 Vdc 500 mA max
Operating ambient temperature	-20°C ÷ +55°C
Power supply to indicator-light	24 Vac (5W max)
Four protection fuses	6.3 A transformer 1.6 A accessories
Safety timer	255 seconds
Motor braking	fixed

Inputs - Open, partially open, stop, closing safety devices, limit-switch
Outputs - Indicator-light, flashing lamp, motor, 24 Vdc power supply for accessories
Programming - Pause time (5/10/15/30/60/120/180 sec.), Logics A1/A2/S1/S2/E1/E2/B/C, pre-flashing

Model	Use		Control board
	Max weight (kg)	Use frequency (cycles/hour)	
844 R THREE-PHASE	2.200 (Z12)	70	Not included
	1.600 (Z16)		